



宁波驰翔机电科技有限公司

宁波市鄞州区鄞东北路 518 号

联系人：毛先生

电话：0574-88055058

传真：0574-89016955

邮箱：mao@cxmacerator.com

Ningbo Chixiang Electromechanical Tech Co.,Ltd

No.518 Yindong North Road, Economic and Technology development Zone, Yinzhou, Ningbo, China

Contact: Mr.Mao

TEL : +86 574 88055058

FAX: +86 574 89016955

E-mail: mao@cxmacerator.com

WWW.CXMACERATOR.COM



issue n° 2023

CHINA · NINGBO
Chixiang Electromechanical Tech Co.,Ltd

中国 · 宁波驰翔机电科技有限公司



家庭厨卫好帮手

特征

- 独立合理的外观设计
- 高性能水电分离的安全保护
- 独特的防缠绕保护结构
- 行业内独一无二的全不锈钢机芯
- 内含多项专利技术
- 高扬程、大流量、低噪音、功能强劲
- 性能稳定、维修方便、安装便捷

Features

- Independent and reasonable appearance design
- Safety protection of high performance water and electricity separation
- Unique anti-winding protective structure
- Unique all-stainless steel movement in the industry
- Including a number of patented technologies
- High lift, large flow, low noise, strong function
- Stable performance, convenient maintenance and installation



CHIXIANG Electromechanical Tech

Contents

驰翔机电 / Chixiang Electromechanical

关于驰翔 / About ChiXiang	01
公司团队 / Corporate Team	03
证书 / Certificate	04
车间一角 / Workshop Corner	05

欧洲标准 / European Type

WL300A	07
WL450A	08
WL450C	09
WL600A	10
WL600C	11
WL600E	12
WL750A	13



ABOUT CHIXIANG

关于驰翔

宁波驰翔机电科技有限公司位于宁波市鄞州区，地处浙东象山港畔，海陆交通便捷，是未来宁波沿海经济开发的重要集散基地。

公司总占地面积 12000 平方米，总建筑面积 15000 平方米，近年来不断引进科技人才和国外先进设备，自主研发设计出全自动污水提升器系列产品，适用于所有无法依靠重力排水的环境下的无腐蚀型污水处理。可用于收集厕所排泄物，淋浴房、洗手盆、洗衣机等废水，并泵送到主排污系统。也可用于空调冷凝水的收集，并泵送到排水系统，带有独立切割装置的切割型水泵可以将长纤维状杂质切碎后泵送到主排污管道。

公司流水线年生产能力为 8 万台 / 套，产品除内销外，还远销欧美和东南亚各国，深得用户好评。公司同时还生产五金工具、汽车配件、制冷部件、以及塑料制品和各类模具制造。

本公司坚持质量第一，诚信为本，诚邀国内外新老客户的真诚合作，共谋发展，共创美好明天！

Ningbo CHIXIANG Electromechanical Tech Co., LTD is located in Ningbo Zone which is the coastal distribution base of Ningbo, near Xiangshan sea port. The transportation through land or sea is very convenient.

The company covers an area of 12,000 square meters, with a total construction area of 15,000 square meters. In recent years, we introduce the foreign advanced equipment and professional technology, independent research and design a series of automatic sewage lifting device. In the non-gravity drainage circumstance, it can treat all the non-corrosive type sewage. It collects toilet excreta, shower, washbasins and washing machine waste water and pump to main sewage treatment system. It also can be used for air conditioning condensate water collected and pumped to the drainage system, separated cutting device with cutting-type pump will shred the long fibrous impurities before pumped to the main sewage pipes.

Each of our production line can manufacture the sewage lifting device 80,000 sets per year. In addition to the domestic market, we also export to Europe, America and Southeast Asian countries with good reputation in the world. The company also produces hardware tools, auto parts, refrigeration parts, as well as all kinds of plastic products and mold manufacturing.

With honesty, we offer high quality product with competitive prices and sincerely hope to cooperate with worldwide customers. Common development, for a better tomorrow.

Corporate Team

公司团队

卓越的品质来自严格科学的生产过程，驰翔一如既往的把产品的质量视为企业的生命。

Excellent quality comes from strict and scientific production process. Chixiang always regards product quality as the life of the enterprise.



Certificate

证书



Workshop Corner

车间一角

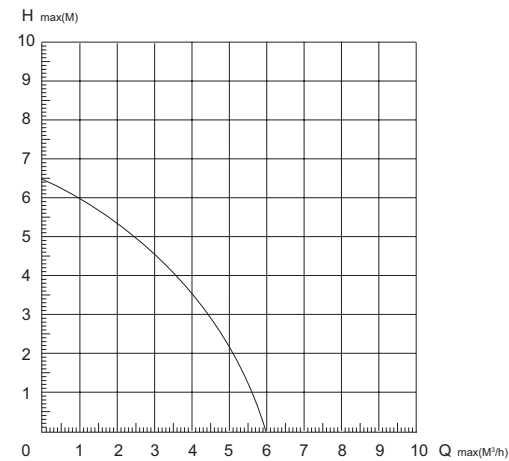




WL300A

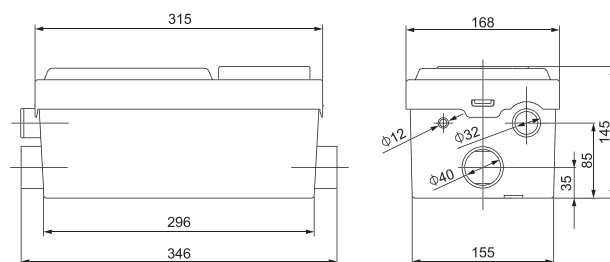
SPECIFICATION

Voltage	220V-240V 50HZ
Power consumption	300W
Insulation Class	F
Speed	2850RPM
Noise Level	< 45db
Enclosure Class	IP54
Sewage height(ON)	55mm
Sewage height(OFF)	25mm
Max Flow	100(L/min)
Max Lift	6.5M



PACKAGE

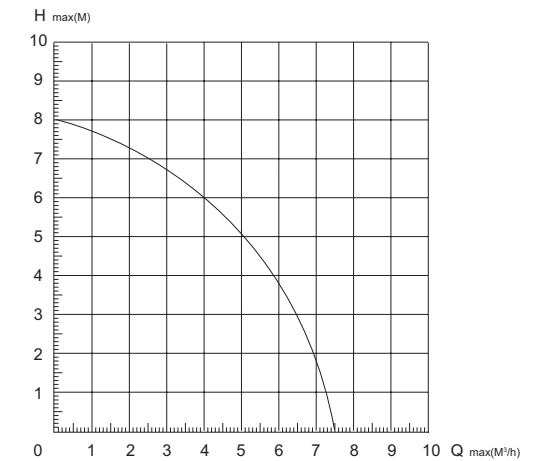
QTY/CTN	1 PCS/CTN
G.W/N.W.	4.9 / 4 KGS
CARTON SIZE	36 X 24 X 20CM
20GP	1766 PCS
40GP	3656 PCS
40HQ	4127 PCS



WL450A

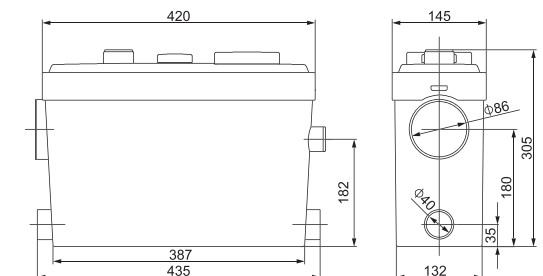
SPECIFICATION

Voltage	220V-240V 50HZ
Power consumption	450W
Insulation Class	F
Speed	2850RPM
Noise Level	< 45db
Enclosure Class	IP55
Sewage height(ON)	75mm
Sewage height(OFF)	35mm
Max Flow	125(L/min)
Max Lift	8M



PACKAGE

QTY/CTN	1 PCS/CTN
G.W/N.W.	6.8 / 5.8 KGS
CARTON SIZE	46.3 X 21.2 X 35CM
20GP	900 PCS
40GP	1878 PCS
40HQ	2165 PCS

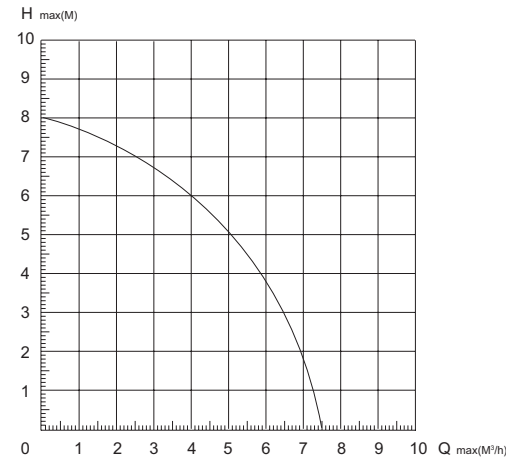




WL450C

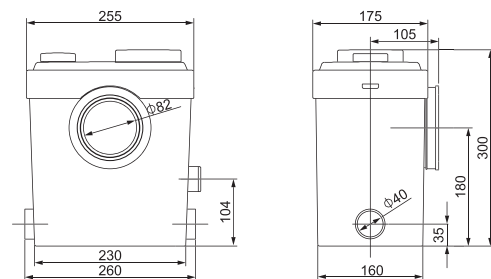
SPECIFICATION

Voltage	220V-240V 50HZ
Power consumption	450W
Insulation Class	F
Speed	2850RPM
Noise Level	< 45db
Enclosure Class	IP55
Sewage height(ON)	80mm
Sewage height(OFF)	30mm
Max Flow	125(L/min)
Max Lift	8M



PACKAGE

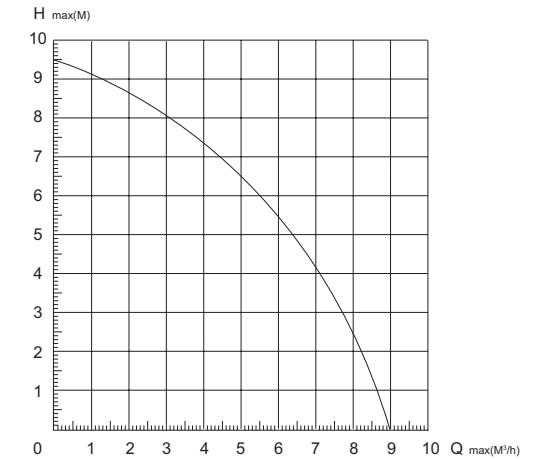
QTY/CTN	1 PCS/CTN
G.W/N.W.	6 / 5.2 KGS
CARTON SIZE	28.5 X 23.1 X 35CM
20GP	1330 PCS
40GP	2914 PCS
40HQ	3282 PCS



WL600A

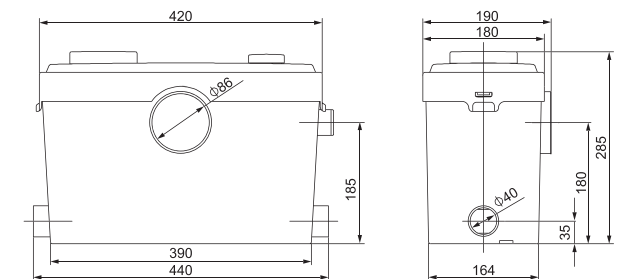
SPECIFICATION

Voltage	220V-240V 50HZ
Power consumption	600W
Insulation Class	F
Speed	2850RPM
Noise Level	< 45db
Enclosure Class	IP55
Sewage height(ON)	65mm
Sewage height(OFF)	35mm
Max Flow	150(L/min)
Max Lift	9.5M



PACKAGE

QTY/CTN	1 PCS/CTN
G.W/N.W.	7.5 / 6.5 KGS
CARTON SIZE	46.2 X 25.4 X 35.1CM
20GP	756 PCS
40GP	1556 PCS
40HQ	1765 PCS



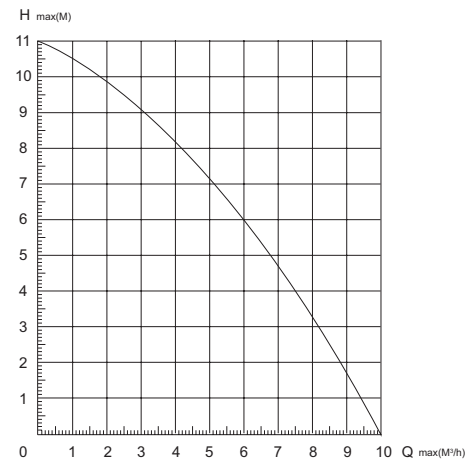


WL600C

WL600E

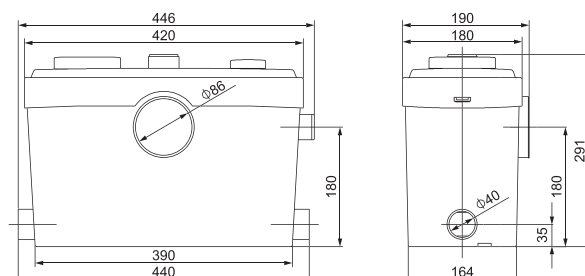
SPECIFICATION

Voltage	220V-240V 50HZ
Power consumption	600W
Insulation Class	F
Speed	2850RPM
Noise Level	< 45db
Enclosure Class	IP55
Sewage height(ON)	65mm
Sewage height(OFF)	35mm
Max Flow	150(L/min)
Max Lift	9.5M



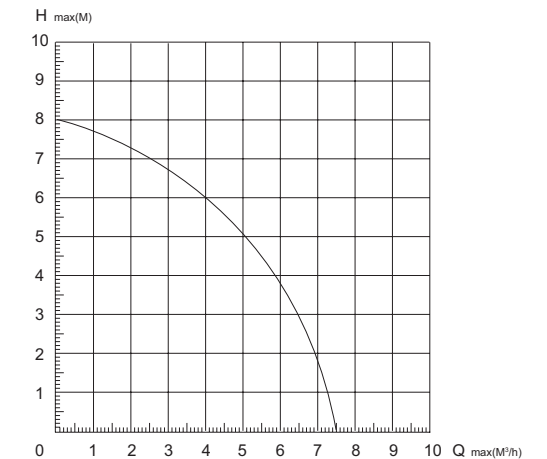
PACKAGE

QTY/CTN	1 PCS/CTN
G.W/N.W.	7.5 / 6.5 KGS
CARTON SIZE	46.2 X 25.4 X 35.1CM
20GP	756 PCS
40GP	1556 PCS
40HQ	1765 PCS



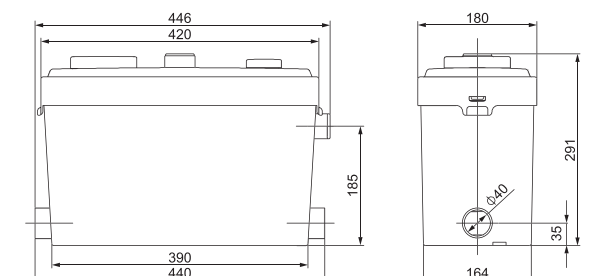
SPECIFICATION

Voltage	220V-240V 50HZ
Power consumption	600W
Insulation Class	F
Speed	2850RPM
Noise Level	< 45db
Enclosure Class	IP55
Sewage height(ON)	65mm
Sewage height(OFF)	35mm
Max Flow	150(L/min)
Max Lift	9.5M



PACKAGE

QTY/CTN	1 PCS/CTN
G.W/N.W.	7.5 / 6.5 KGS
CARTON SIZE	46.2 X 25.4 X 35.1CM
20GP	756 PCS
40GP	1556 PCS
40HQ	1765 PCS

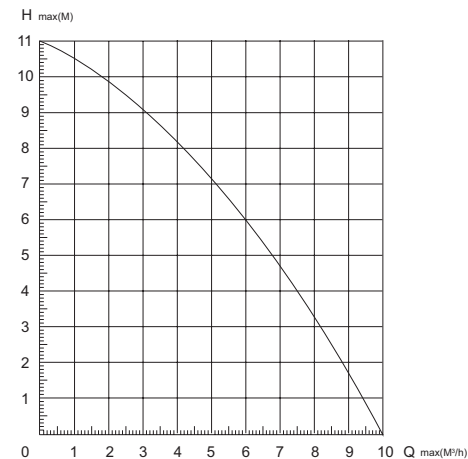




欧洲标准
European Type

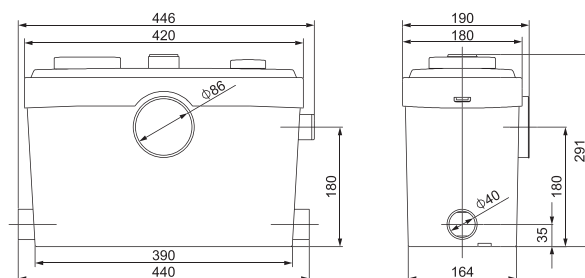
SPECIFICATION

Voltage	220V-240V 50HZ
Power consumption	750W
Insulation Class	F
Speed	2850RPM
Noise Level	< 45db
Enclosure Class	IP55
Sewage height(ON)	65mm
Sewage height(OFF)	35mm
Max Flow	165(L/min)
Max Lift	11M



PACKAGE

QTY/CTN	1 PCS/CTN
G.W/N.W.	7.6 / 6.6 KGS
CARTON SIZE	46.2 X 25.4 X 35.1CM
20GP	756 PCS
40GP	1556 PCS
40HQ	1765 PCS



CHINA · NINGBO
Chixiang Electromechanical Tech Co.,Ltd

中国·宁波驰翔机电科技有限公司

